



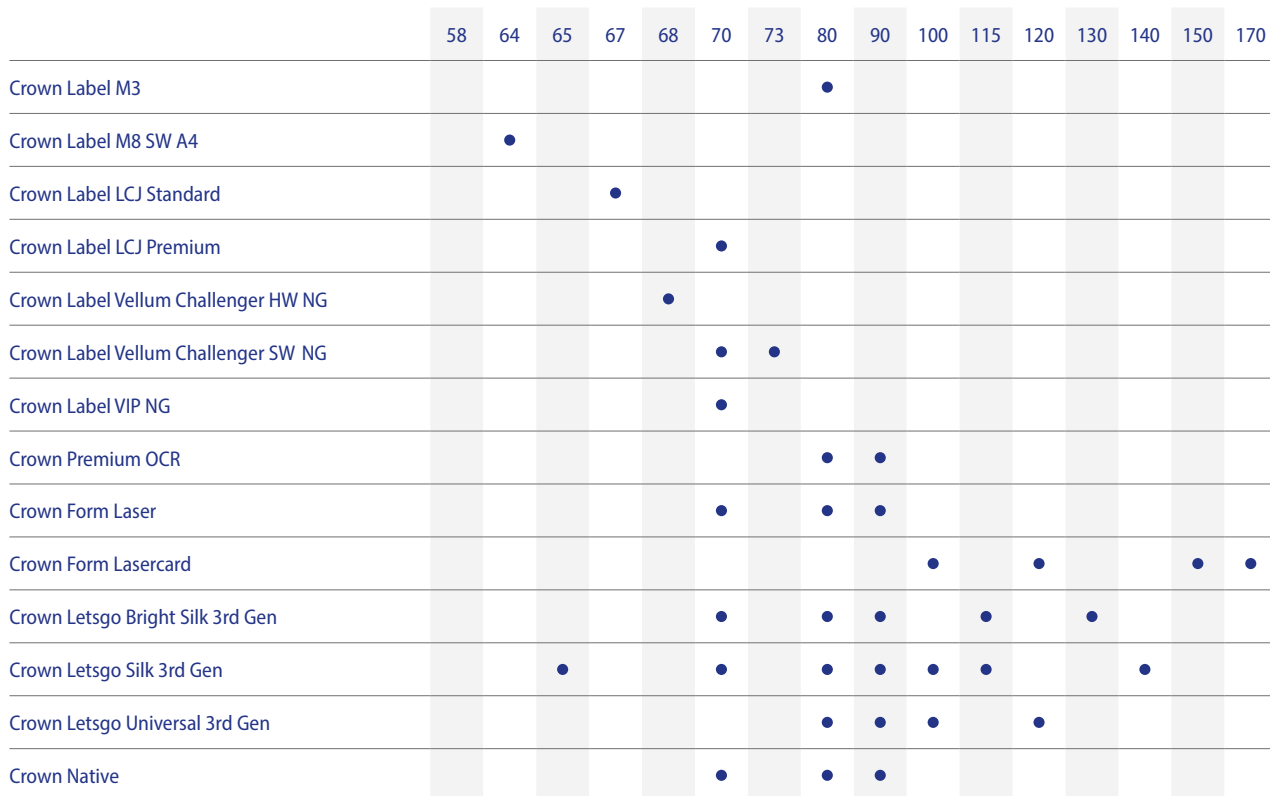
**LABEL FACE
PAPER**

Logistics labelling paper for laser, inkjet and thermal transfer print. And water-based inkjet papers ideal for on-demand printing. Discover our range of base papers for self-adhesive labels.

Optimised for your use case

Opacity, stiffness, bar code readability and sufficient strength for matrix stripping. Whatever your needs are, our team is ready to find or develop a tailor-made label face paper to fit your exact requirements. Our organisation is agile and flexible, making us the ideal partner to explore new solutions with. Naturally, all our products are engineered for optimal runability, ensuring a hassle-free production process.

For product labels, Crown Letsgo is the paper of choice. Optimised for water-based inkjet, it allows you to take advantage of the many benefits of digital print. With our unique surface treatment, the label combines vivid colours and crisp detail with high customisability and cost-effective printing of small runs.



○ = On request

Crown Label M3

Basepaper for transfer metallizing and extrusion lamination.

Special features	High smoothness, high strength
CIE Whiteness	115

Basis weight (g/m ²)	Caliper (µm)	Bekk Smoothness Topside (s)	Tensile MD/CD (kg/15 mm)	Tear MD/CD (mN)	
80	85	120	10.4 / 5.7	700 / 750	●

Crown Label M8 SW A4

Super white facepaper for Office and Logistic labels with a low basis weight with good bulk.

Printing method	Laser, inkjet print
Special features	Low Basis weight with good bulk
CIE Whiteness	153

Basis weight (g/m ²)	Caliper (µm)	Bekk Smoothness Topside (s)	Tensile MD/CD (kg/15 mm)	Tear MD/CD (mN)	
64	74.5	70	8.4 / 4.0	500 / 510	●



All paper grades can be delivered with FSC®COC- or PEFC COC-certificate.

● = On request

CIE Whiteness	ISO 11475
Basisweight	ISO 536
Caliper	ISO 534
Bekk Smoothness Topside	ISO 5627
Tensile MD/CD	ISO 1924-2
Tear	ISO 1974

Crown Label LCJ Standard

Super white facepaper for Office and Logistic labels with excellent printability.

Printing method	Laser, inkjet print
Special features	High white. Uncoated, matte surface, high bulk.
CIE Whiteness	160

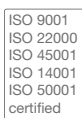
Basis weight (g/m ²)	Caliper (µm)	Bekk Smoothness Topside (s)	Tensile MD/CD (kg/15 mm)	Tear MD/CD (mN)	
67	82	37	7.0 / 3.2	490 / 550	●

Crown Label LCJ Premium

Facepaper for Office and Logistic labels.

Printing method	Laser, inkjet print
Special features	Designed for lasercopy and inkjet print High white High bulk Low smooth surface
CIE Whiteness	160

Basis weight (g/m ²)	Caliper (µm)	Bekk Smoothness Topside (s)	Tensile MD/CD (kg/15 mm)	Tear MD/CD (mN)	
70	87	37	7.3 / 3.4	520 / 570	●



CIE Whiteness	ISO 11475
Basisweight	ISO 536
Caliper	ISO 534
Bekk Smoothness Topside	ISO 5627
Tensile MD/CD	ISO 1924-2
Tear	ISO 1974

All paper grades can be delivered with FSC®COC- or PEFC COC-certificate.

○ = On request

Crown V Challenger HW NG

Facepaper for office and logistics labels. With very high smoothness for demanding thermal transfer print.

Printing method	Thermal transfer print
Special features	Very high smoothness for demanding Thermal transfer print.
CIE Whiteness	137

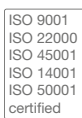
Basis weight (g/m ²)	Caliper (µm)	Bekk Smoothness Topside (s)	Tensile MD/CD (kg/15 mm)	Tear MD/CD (mN)	
68	68	250	7.5 / 3.7	500 / 520	●

Crown V Challenger SW NG

Super white facepaper for office and logistics labels. With very high smoothness for demanding thermal transfer print.

Printing method	Thermal transfer print
Special features	Very high smoothness for demanding Thermal transfer print. High white.
CIE Whiteness	153

Basis weight (g/m ²)	Caliper (µm)	Bekk Smoothness Topside (s)	Tensile MD/CD (kg/15 mm)	Tear MD/CD (mN)	
70	70	250	7.7 / 3.7	520 / 520	●
73	73	250	8.0 / 3.9	540 / 560	●



CIE Whiteness	ISO 11475
Basisweight	ISO 536
Caliper	ISO 534
Bekk Smoothness Topside	ISO 5627
Tensile MD/CD	ISO 1924-2
Tear	ISO 1974

All paper grades can be delivered with FSC®COC- or PEFC COC-certificate.

● = On request

Crown Label VIP NG

Superior strength facepaper for office and logistics labels. With very high smoothness for demanding thermal transfer print.

Printing method	Thermal transfer print
Special features	Very high smoothness for demanding Thermal transfer print. Superior strength.
CIE Whiteness	148

Basis weight (g/m ²)	Caliper (µm)	Bekk Smoothness Topside (s)	Tensile MD/CD (kg/15 mm)	Tear MD/CD (mN)	
70	70	250	8.5 / 4.0	520 / 560	●

Crown Premium OCR

A bright, high white bulky paper for robust office and logistic labels.

Printing method	Laser and inkjet
Special features	High white paper, low smoothness.
CIE Whiteness	160

Basis weight (g/m ²)	Caliper (µm)	Bekk Smoothness Topside (s)	Tensile MD/CD (kg/15 mm)	Tear MD/CD (mN)	
80	104	30	9.0 / 3.5	570 / 630	●
90	117	30	10.0 / 4.0	650 / 780	●



○ = On request

CIE Whiteness	ISO 11475
Basisweight	ISO 536
Caliper	ISO 534
Bekk Smoothness Topside	ISO 5627
Tensile MD/CD	ISO 1924-2
Tear	ISO 1974

Crown Form Laser

A broad range of Basis weights for office and logistic labels but also for self adhesive tags, cards or other special products.

	Crown Form Laser	Crown Form Lasercard
Printing method	Laser and inkjet	Laser and inkjet
Special features	White paper, low smoothness.	White paper, low smoothness.
CIE Whiteness	139	139

Basis weight (g/m ²)	Caliper (µm)	Bekk Smoothness Topside (s)	Tensile MD/CD (kg/15 mm)	Tear MD/CD (mN)	
70	88	40	8.0 / 3.5	575 / 650	●
80	100	40	8.5 / 3.75	625 / 675	●
90	113	35	9.5 / 4.25	700 / 775	●
100	120	35	9.5 / 4.25	725 / 825	●
120	144	30	10.0 / 4.75	825 / 975	●
150	173	30	11.5 / 5.5	1000 / 1175	●
170	196	30	12.5 / 6.5	1125 / 1325	●



○ = On request

CIE Whiteness	ISO 11475
Basisweight	ISO 536
Caliper	ISO 534
Bekk Smoothness Topside	ISO 5627
Tensile MD/CD	ISO 1924-2
Tear	ISO 1974

CROWN

lets go

Boosting inkjet performance

A silky touch. Bold, vibrant colors. And full-speed printing without the slightest loss in quality. Crown Letsgo is taking inkjet performance to levels never seen before.

Developed in close collaboration with leaders in digital print, our paper has been the go-to choice for publishers around the globe for over a decade. Find out what your inkjet printer is truly capable of with Crown Letsgo.



Unrivalled Optical Density

Our industry-leading coating catches the ink where it counts: right at the surface of the paper. The result? Crisp details and powerful colors, printed with less ink than ever.



Optimal Runability

From print to finish. Crown Letsgo has been engineered for a fast and hassle-free production process. Run at over 100 meters a minute while maintaining the highest possible quality.



Expertise Included

Rest assured that you're getting the best out of your machine with our color management specialists. With extensive knowledge of a wide range of printer profiles, our experts will help you optimize quality and minimize your total cost of print.

Crown Letsgo Bright Silk 3rd Gen

High-white label facepaper for water-based inkjet print. Uncoated, silky smooth, bright white and vibrant colours.

Printing method	full colour inkjet, UV offset, toner
Inkjet treatment	dye and pigment
Special features	High white. Uncoated Silky-smooth paper for high quality inkjet print product labels.
CIE Whiteness	160

Basis weight (g/m ²)	Caliper (µm)	Bekk Smoothness Topside (s)	Tensile MD/CD (kg/15 mm)	Tear MD/CD (mN)	
70	75.5	190	7.0 / 3.5	525 / 575	●
80	85.0	180	8.0 / 4.0	600 / 650	●
90	93.5	180	8.5 / 4.25	625 / 700	●
115	116	150	9.5 / 5.25	800 / 875	●
130	131	160	10.5 / 5.5	875 / 975	●



○ = On request

CIE Whiteness	ISO 11475
Basisweight	ISO 536
Caliper	ISO 534
Bekk Smoothness Topside	ISO 5627
Tensile MD/CD	ISO 1924-2
Tear	ISO 1974

Crown Letsgo Silk 3rd Gen

High-white label facepaper for water-based inkjet print. Uncoated, silky smooth, bright white and vibrant colours.

Printing method	full colour inkjet, UV offset, toner
Inkjet treatment	dye and pigment
Special features	Uncoated Silky-smooth paper for high quality inkjet print product labels.
CIE Whiteness	124

Basis weight (g/m ²)	Caliper (µm)	Bekk Smoothness Topside (s)	Tensile MD/CD (kg/15 mm)	Tear MD/CD (mN)	
65	71	190	7.0 / 3.5	552 / 525	●
70	75.5	190	7.5 / 3.75	525 / 550	●
80	85	180	7.5 / 4.0	600 / 625	●
90	94.5	160	8.0 / 4.0	650 / 725	●
100	105	140	8.5 / 4.5	650 / 750	●
115	116	150	9.5 / 5.25	825 / 875	●
140	141,5	140	11.5 / 6.75	1000 / 1075	●



All paper grades can be delivered with FSC®COC- or PEFC COC-certificate.

○ = On request

CIE Whiteness	ISO 11475
Basisweight	ISO 536
Caliper	ISO 534
Bekk Smoothness Topside	ISO 5627
Tensile MD/CD	ISO 1924-2
Tear	ISO 1974

Crown Letsgo Universal 3rd Gen

High-white, high-bulk label facepaper with a matte finish.

Printing method	full colour inkjet, UV offset, toner
Inkjet treatment	dye and pigment
Special features	Uncoated Matte paper for high quality inkjet print. High whiteness, high bulk
CIE Whiteness	164

Basis weight (g/m ²)	Caliper (µm)	Bekk Smoothness Topside (s)	Tensile MD/CD (kg/15 mm)	Tear MD/CD (mN)	
80	96	60	8.5 / 3.75	625 / 700	●
90	108	50	9.0 / 4.25	675 / 775	●
100	120	50	9.5 / 4.5	750 / 850	●
120	144	40	10.0 / 4.75	875 / 1025	●



All paper grades can be delivered with FSC®COC- or PEFC COC-certificate.

● = On request

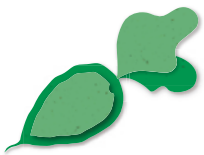
CIE Whiteness	ISO 11475
Basisweight	ISO 536
Caliper	ISO 534
Bekk Smoothness Topside	ISO 5627
Tensile MD/CD	ISO 1924-2
Tear	ISO 1974

CROWN **native**

Dutch grown sugar beet paper



Crown van Gelder is making paper greener than ever. Meet Crown Native: high-quality paper that replaces 20% of the wood fibers with sugar beet pulp to reduce its environmental impact by 16%. Crown Native is strong, affordable, food-safe and can be re-used up to seven times. In short: a green front-runner in paper for bags.



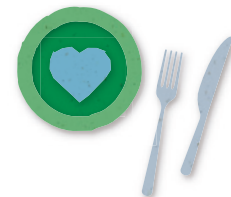
Sugar beet pulp

Materials left over after processing sugar beets are given a new, high-quality purpose in Crown Native.



Locally sourced

The sugar beets are all produced in a 150 km radius from our plant, significantly cutting down on transport emissions.



Food-safe

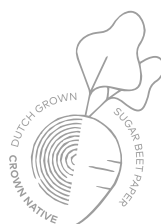
By using locally sourced virgin fibres, Crown Native is suitable for food packaging. Fully FDA compliant and BfR36 approved.

Reduce Your Environmental Footprint

Crown Native reduces your environmental impact across the board. From CO2 emissions, and particulate matter formation to terrestrial acidification. Crown Native also cuts down the agricultural acreage and amount of fresh water required for paper production.

A Green Reminder

Our subtle, yet eye-catching seal re-emphasizes the quality and the sustainable character of your packaging and your product.



Crown Native

Uncoated paper made with sugar beet pulp. By using locally available agricultural side streams, Crown Native’s environmental footprint is 16% smaller than our traditional paper. The visible sugar beet fibres give your product an unique appearance.

Printing method	Flexo, Offset
Special features	Paper with 20% Sugarbeet fiber.
CIE Whiteness	75

Basis weight (g/m ²)	Caliper (µm)	Bendtsen roughness (ml/min)	Tensile MD/CD (kg/15 mm)	Tear MD/CD (mN)	
70	87.5	250	11.2 / 4.0	850 / 950	●
80	100	200	11.4 / 4.1	950 / 1150	●
90	112.5	250	12.2 / 4.4	1200 / 1450	●



● = On request

CIE Whiteness	ISO 11475
Basisweight	ISO 536
Caliper	ISO 534
Bekk Smoothness Topside	ISO 5627
Tensile MD/CD	ISO 1924-2
Tear	ISO 1974

Need advice?

Please don't hesitate to contact our product managers regarding any questions.

Yuck Chan

yuck.chan@cvg.nl
+31 6 5382 6788

Customer service

+31 251 262233

Sustainability and digital developments are changing paper dynamics

The move towards a sustainable and digital society greatly impacts the role of paper in different market segments. To successfully market products, paper processors continuously need to overcome specific technical challenges.

Technical know-how to unlock paper potential

Accurately specified papers are only the starting point of a successful new product. Ensuring that the paper reaches its full potential on processing equipment truly adds value. Delivering the technical expertise needed to make this happen, is what sets Crown Van Gelder apart.

Thriving on making our paper deliver

To ensure you extract optimal value from our papers, Crown Van Gelder offers expert support on-site. Together, we work on making our paper deliver the best possible results on your equipment. In addition, we often tailor our paper to specific customer requirements.

Our segment experts understand the specifics of different production systems and end-products. In constant dialogue with customers and other stakeholders such as equipment manufacturers, we continue building our knowledge. This results in innovations that set new market standards.

For inkjet printing, we offer color management services, contributing to machine uptime and optimal ink consumption.